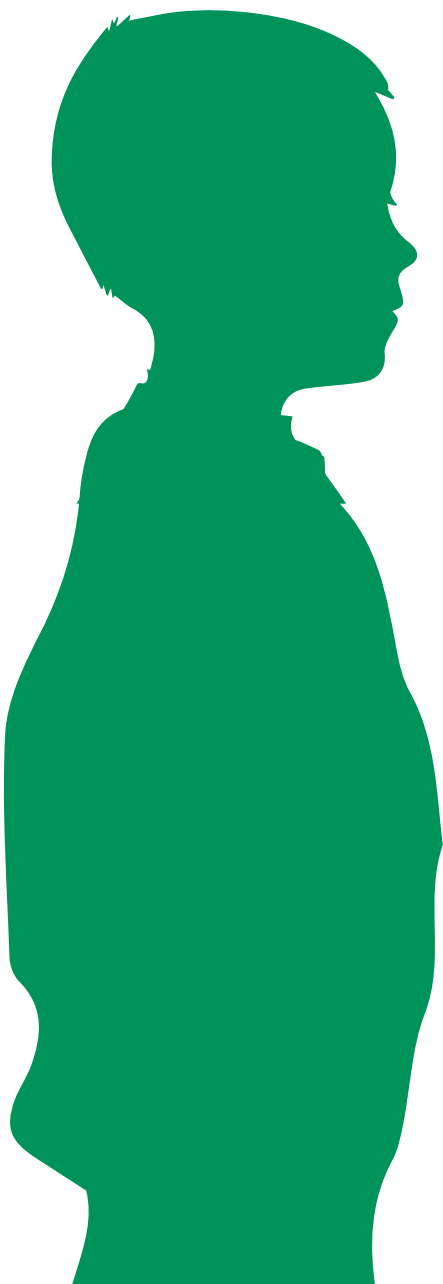


Child Protection

As an organisation regularly working with children, St John believes that children have the right to be emotionally and physically safe at all times and that members must take all reasonable steps to protect children in their care from harm.



What can I do to promote child protection?

Children can be deemed to be at risk of harm through the following types of abuse:

- Physical
- Sexual
- Emotional (including witness to domestic violence)
- Neglect (including homelessness)

St John (Victoria) staff and volunteers must take all reasonable measures to ensure that children are not exposed to the risks listed above and ensure that our protective practices are followed at all times.

Protective Practices

Many children may demonstrate one or more signs which could deem them to be a child at risk at some stage. Unless there are more definite disclosures or allegations, the member must concentrate on protective practices such as those following:

DO

- Conduct yourself as a positive role model to children
- Avoid one-to-one situations with a child; ensure you are always visible by other adults when with children
- Give thought to the arrival and departure of children from St John activities
- Seek ways to comfort and support when a child is upset, without physical contact

DON'T

- Show favouritism or single out children
- Use inappropriate language or discuss inappropriate subject matters in the presence of children
- Dismiss or trivialise bullying
- Use bullying behaviour to manage children or maintain discipline
- Drive a child home alone or take a child to your own home without consent from their parent/guardian

Need more information?

Please refer to the Child Protection Policy and Procedure (available on the St John website) or email the People and Culture Manager on hr@stjohnvic.com.au with your request.

Child Protection Plan

IMMEDIATE DANGER

A concern is raised – by personal observation or report and the child is in immediate danger

Call triple zero (000)

Member should inform Police and Ambulance immediately

Contact your St John Child Protection Officer by dialing 1300 853 515

NO IMMEDIATE DANGER

A concern is raised – by personal observation or report and the child is not in immediate danger

Contact your St John Child Protection Officer by dialing 1300 853 515

ALWAYS REMEMBER

- ▶ Keep a factual and accurate written record of the events leading to your concern, and actions taken
- ▶ Maintain strict confidentiality on the issue
 - ▶ Ensure the child is provided with appropriate ongoing support



ST JOHN AMBULANCE AUSTRALIA (VIC) INC

170 Forster Rd (PO Box 573)
Mt Waverley VIC 3149
T 1300 360 455
hr@stjohnvic.com.au

We aim for at least one person educated, equipped & prepared to provide **First Aid** in every home, workplace & public gathering.